

PLANS AND IMAGES

- Location Plan

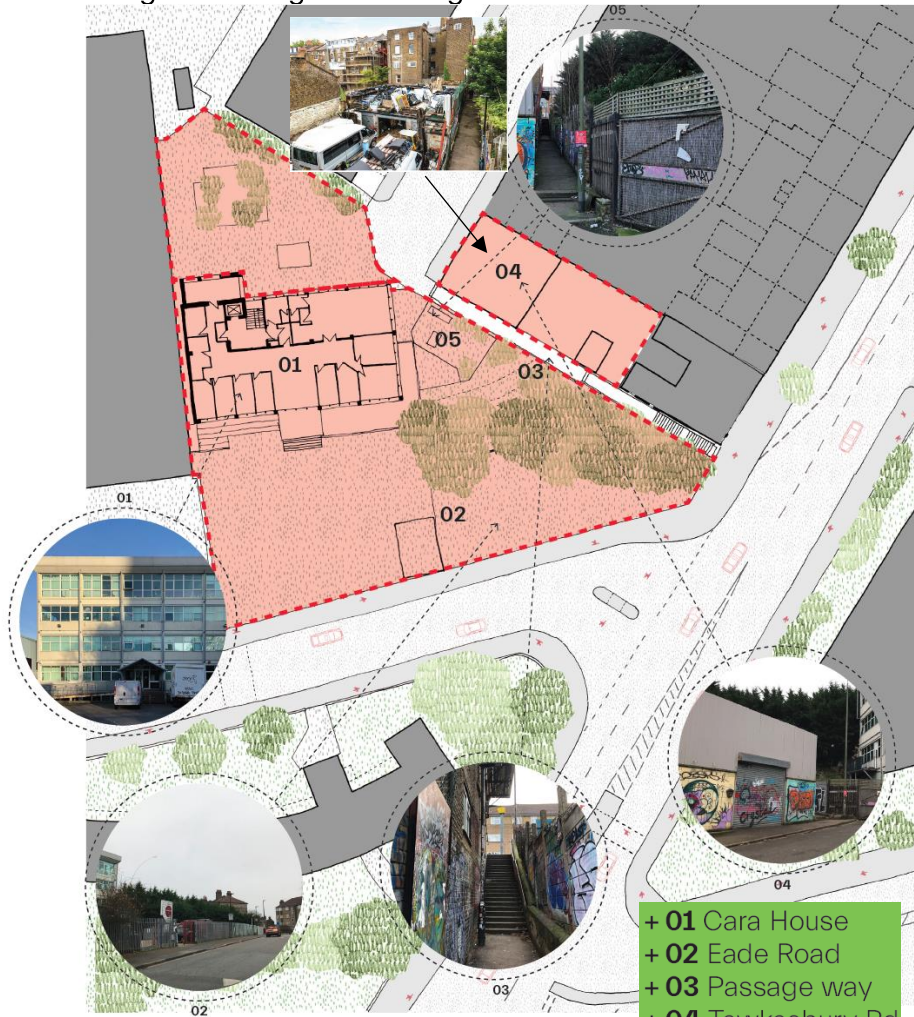


- Image showing satellite photo of the existing site (looking north)

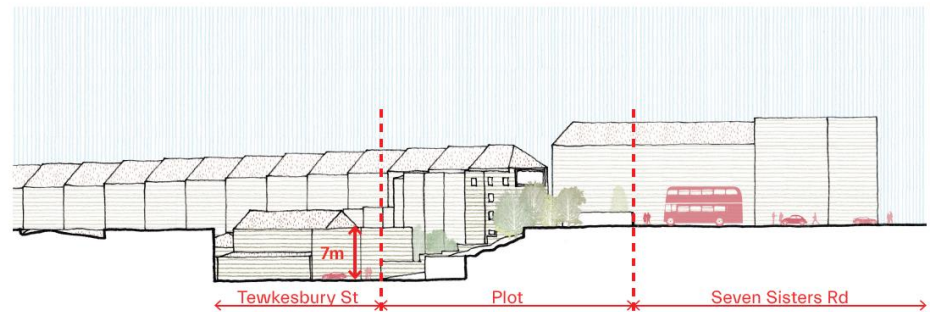
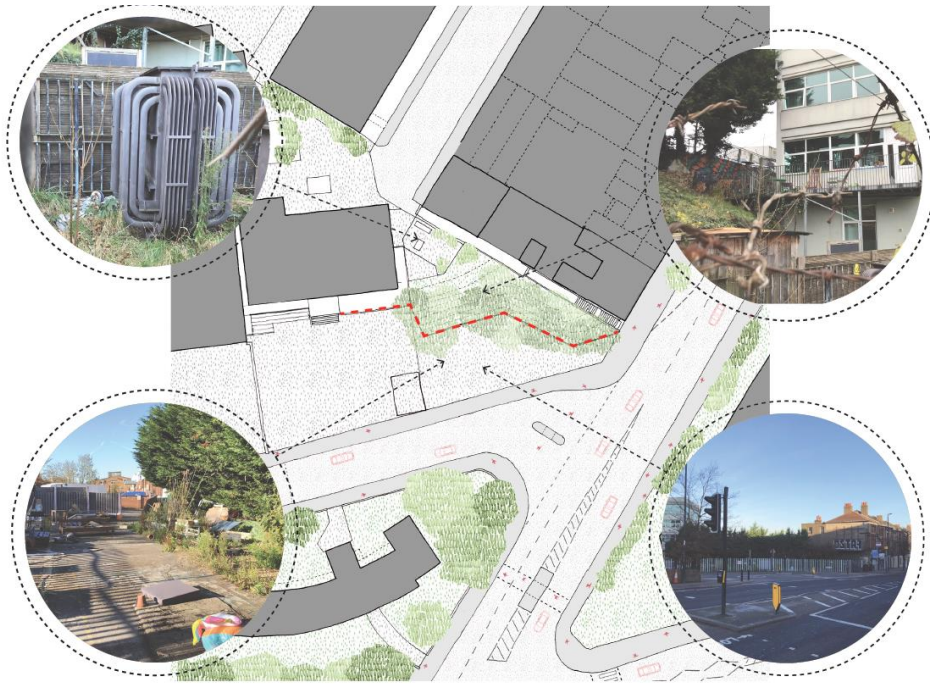


1. Vacant plot on the corner of Eade Road and Seven Sisters Road
2. Cara House + Associated land
3. 2-4 Tewkesbury Road

- Images showing the existing site condition

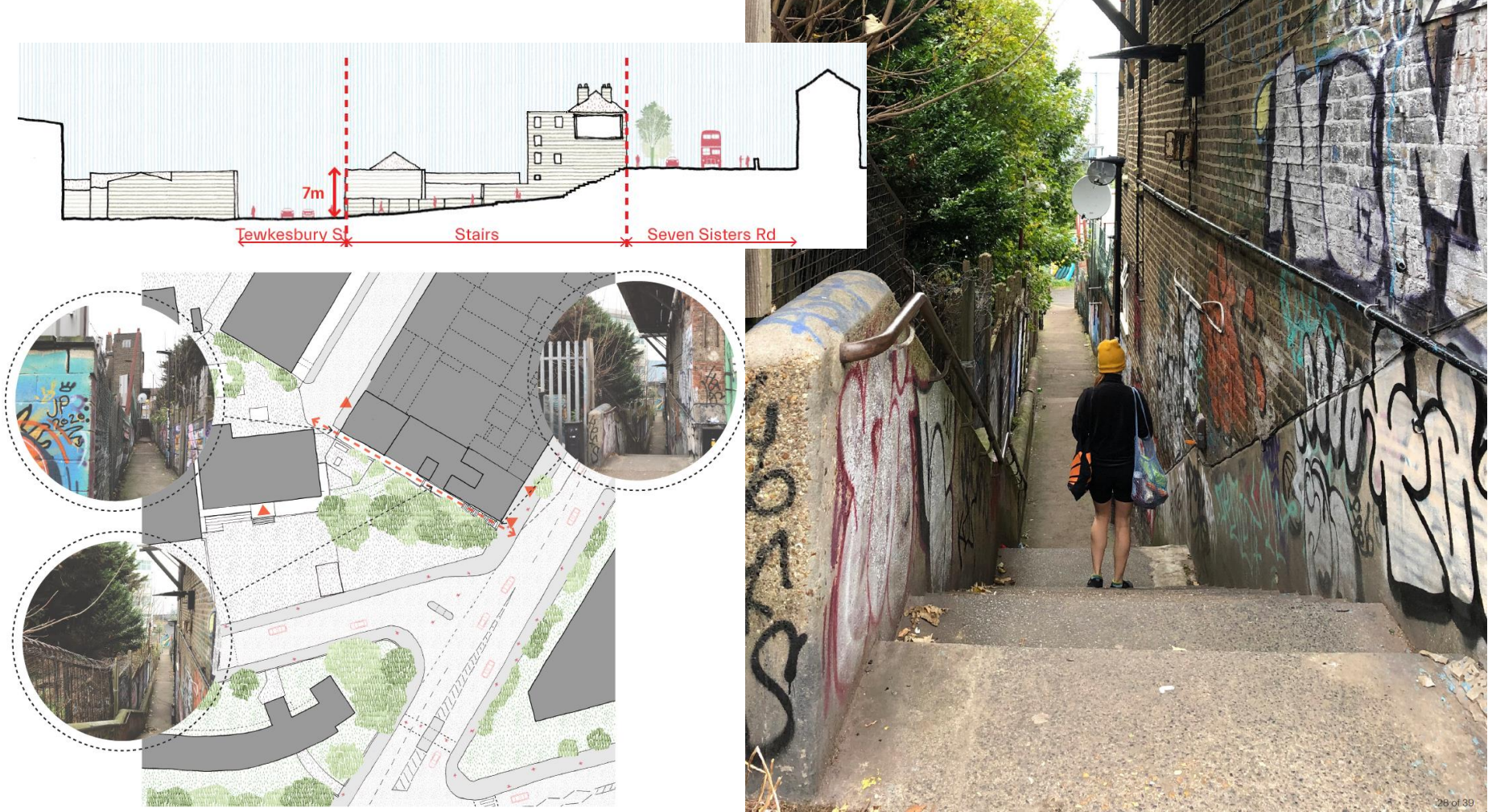


- + 01 Cara House
- + 02 Eade Road
- + 03 Passage way
- + 04 Tewkesbury Rd
- + 05 Substation



- + Level change - around 7 m
- + Existing retaining wall in line with Cara House front facade
- + Full of trees and vegetation at the top of the slope
- + Substation at the bottom of the slope

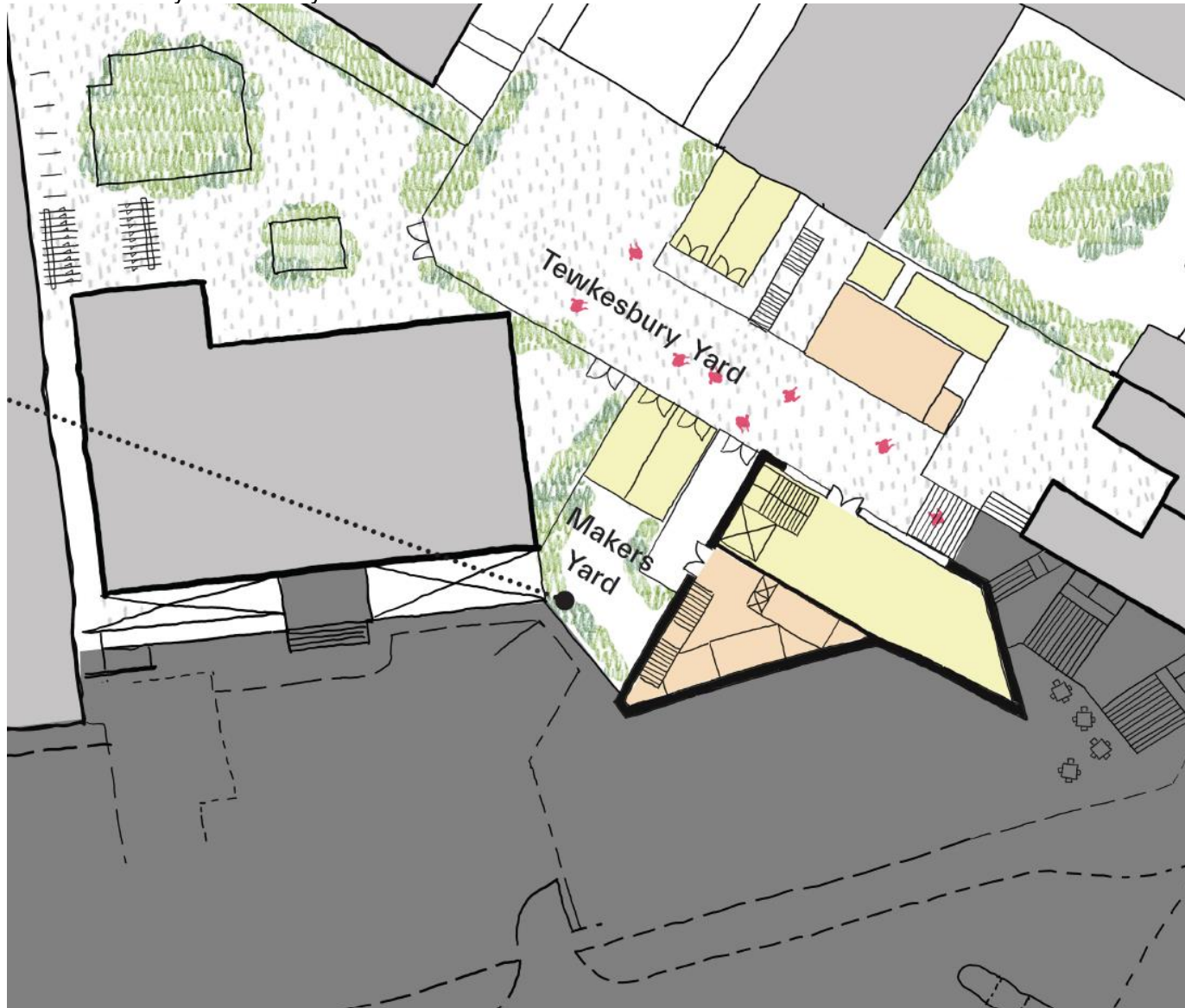
- Images showing the existing condition of the public right of way from Seven Sisters Rd down to Tewkesbury Rd



- Image showing proposed ground floor uses (Seven Sisters/Eade Roads)



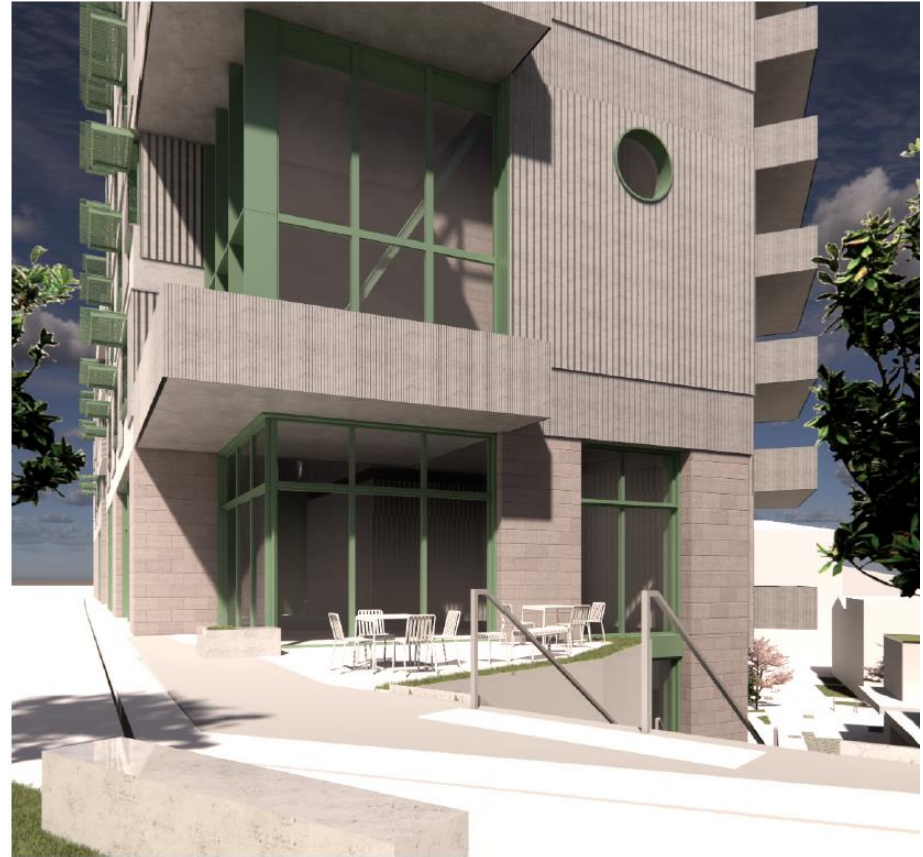
- Tewkesbury Rd level layout



- Typical upper floor plan layout



- CGI images showing the southern façade and the south-eastern corner



- Sketch view looking northwest from Seven Sisters Road (southeast corner)



- Sketch view looking southeast from Tewkesbury Road (towards Seven Sisters Road)



- Image showing view looking north from Seven Sisters Road (Eade Road frontage)



• Servicing strategy

Existing Cycle parking

Cara House existing cycle parking relocated to North of site.

Final location position to be integrated with landscape design

Proposed Residential Cycle parking

Long-stay requirements: 84 spaces

- 5 Standard Sheffield stands
- 3 Enlarged Sheffield stands
- 68 Double stacked spaces

Short-stay requirements: 5 spaces

- 3 Sheffield stands within yard

Proposed Commercial Cycle parking

Long-stay requirements: 2 spaces

- Cycle storage recommended within demise as part of fit-out to suit final occupiers.

Short-stay requirements: 16 spaces

- 8 stands provided across site and levels

	Commercial Frontage to public route
Servicing	
	Drag Distance (Max 10m)
	Travel Distance
	Residential Bin store
	Commercial Bin store
	Bin Collection Pickup point
Cycle parking	
	Residential Long-stay (Covered and secured)
	Residential Short-stay Bikes
	Commercial Short-stay Final stand positions TBC
	Commercial Long-stay* indicative only

